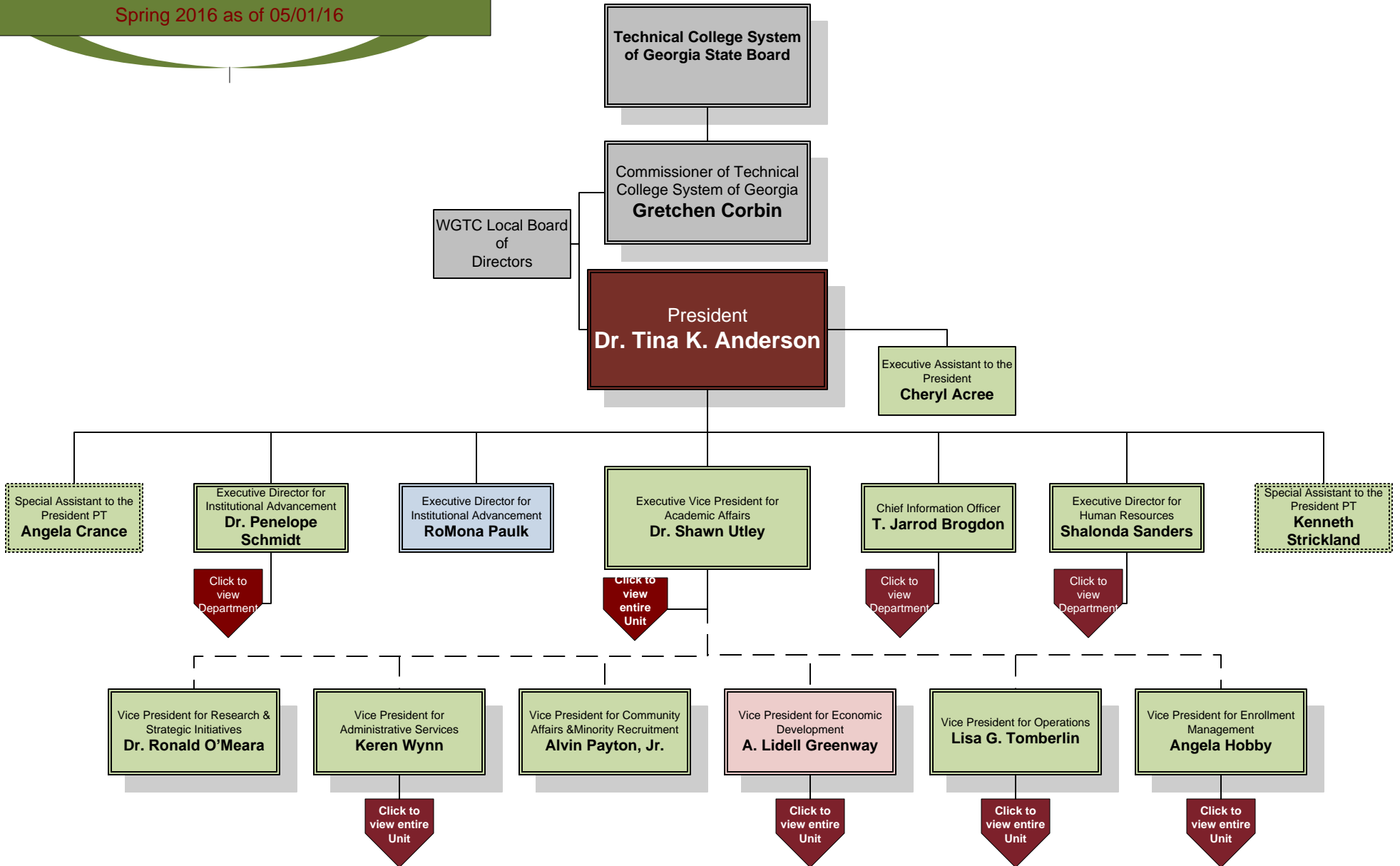


**WIREGRASS GEORGIA TECHNICAL COLLEGE**  
**Organizational Chart**  
 Spring 2016 as of 05/01/16

**CAMPUS LEGEND**

BHI Ben Hill-Irwin	CK Cook	CFE Coffee	VLD Valdosta
-----------------------	------------	---------------	-----------------



# ADVANCEMENT

(click here to return to Executive Office)

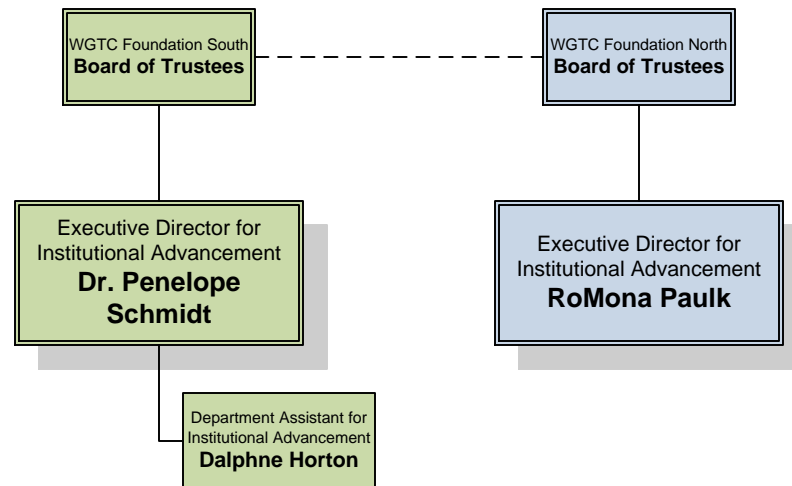
## CAMPUS LEGEND

BHI  
Ben Hill-Irwin

CK  
Cook

CFE  
Coffee

VLD  
Valdosta



**HUMAN  
RESOURCES**  
(click here to return to  
Executive Office)

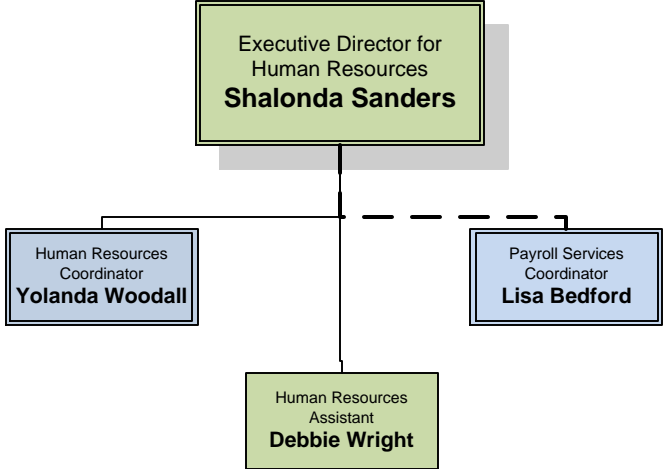
**CAMPUS LEGEND**

BHI  
Ben Hill-Irwin

CK  
Cook

CFE  
Coffee

VLD  
Valdosta



# INFORMATION TECHNOLOGY SERVICES

(click here to return to Executive Office)

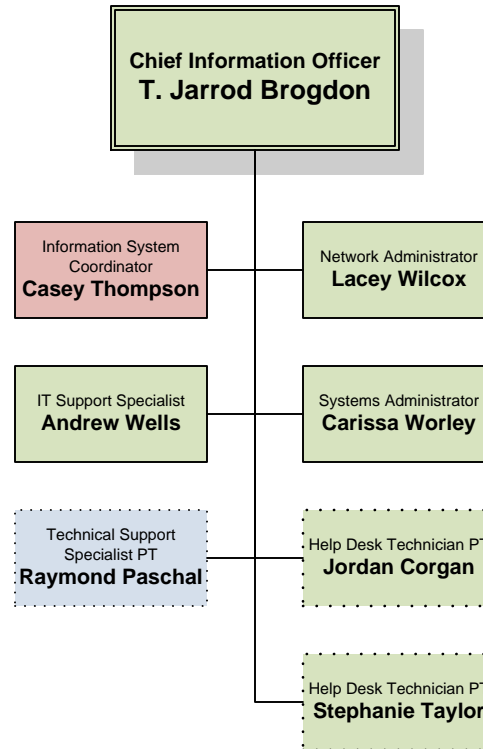
## CAMPUS LEGEND

BHI  
Ben Hill-Irwin

CK  
Cook

CFE  
Coffee

VLD  
Valdosta



**ACADEMIC AFFAIRS**  
 (click here to return to Executive Office)

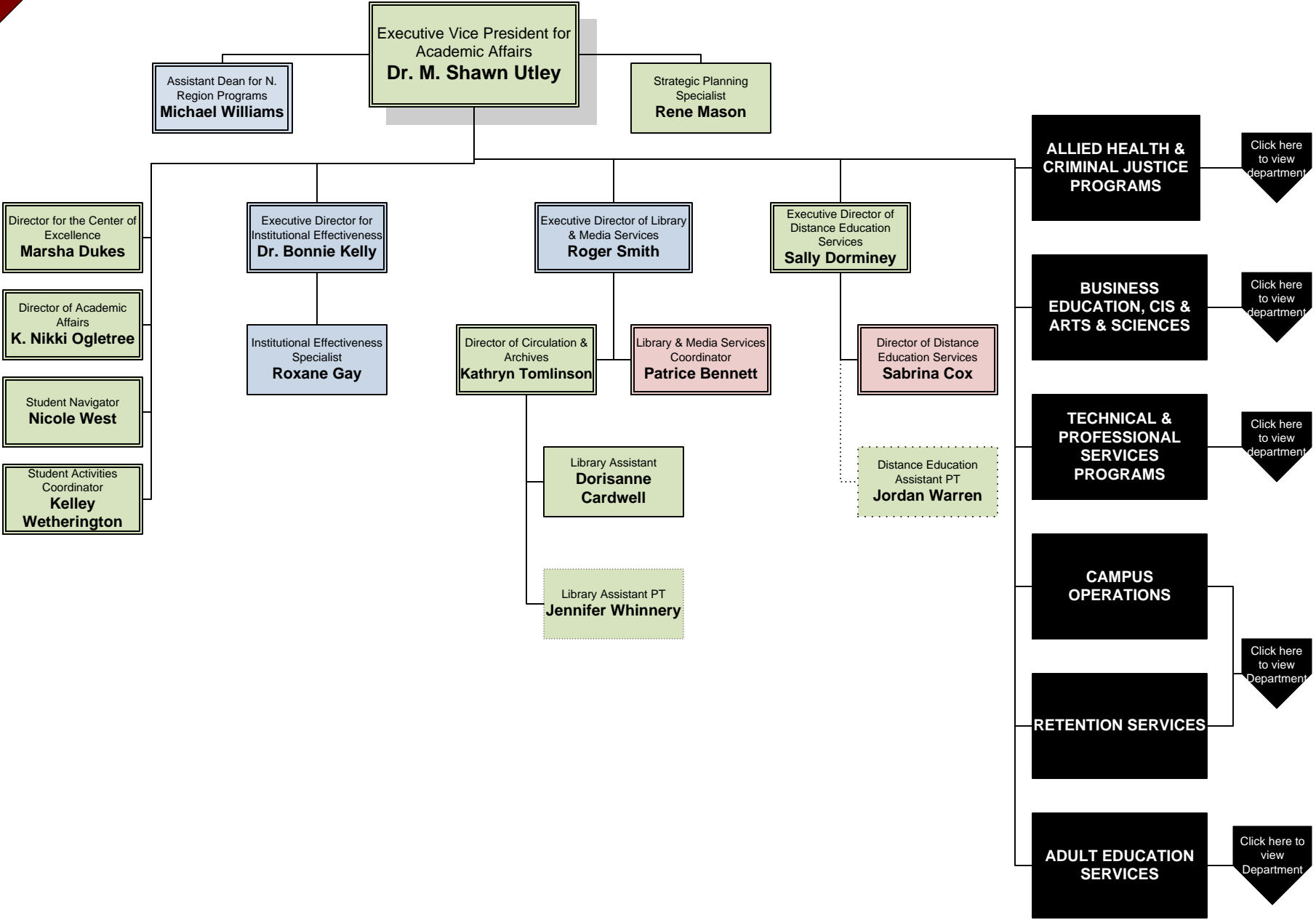
**CAMPUS LEGEND**

BHI  
Ben Hill-Irwin

CK  
Cook

CFE  
Coffee

VLD  
Valdosta



**Campus Operations & Retention Services**  
 (click here to return to Academic Affairs)

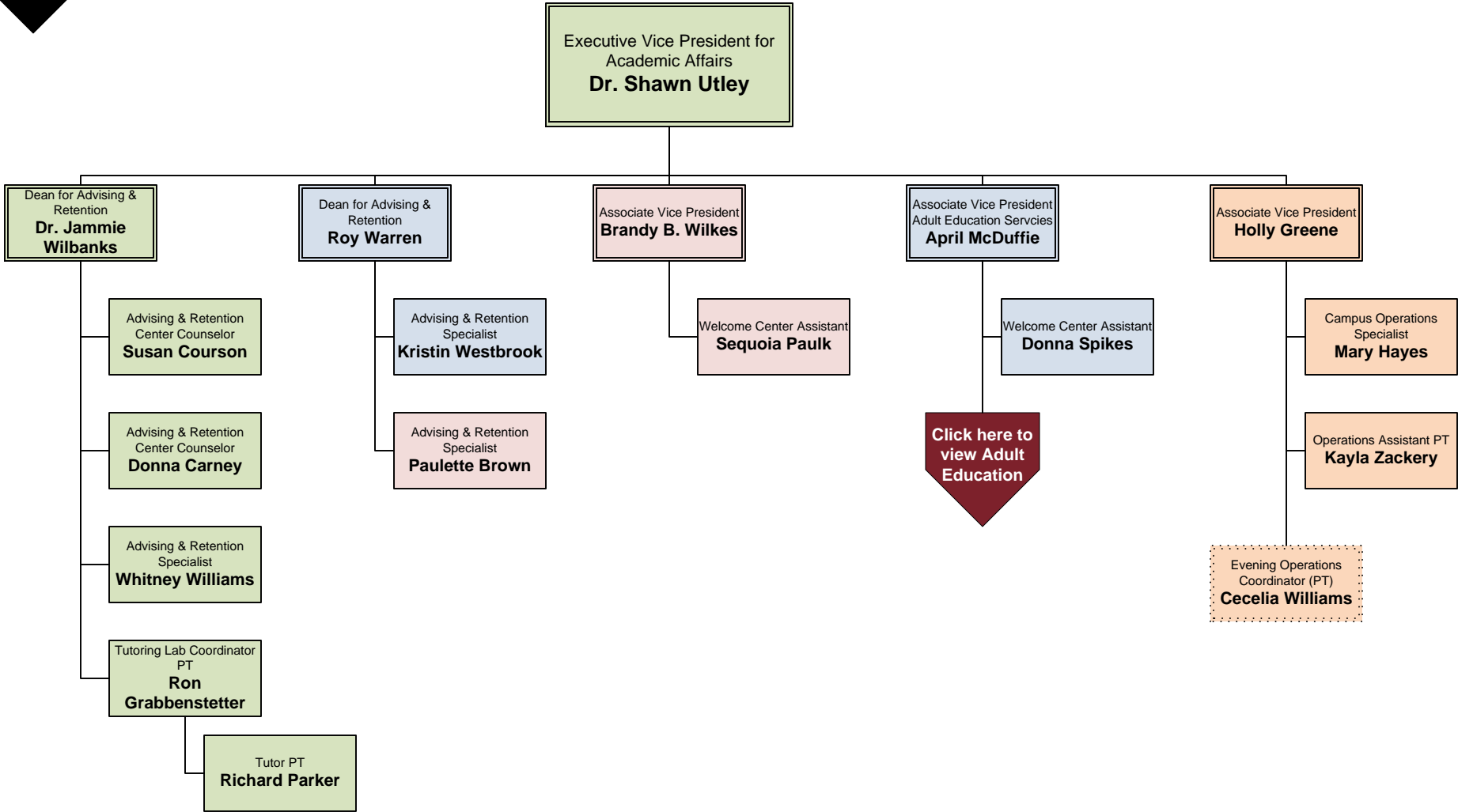
**CAMPUS LEGEND**

BHI  
Ben Hill-Irwin

CK  
Cook

CFE  
Coffee

VLD  
Valdosta



**Allied Health**  
 (click here to return to  
 Academic Affairs)

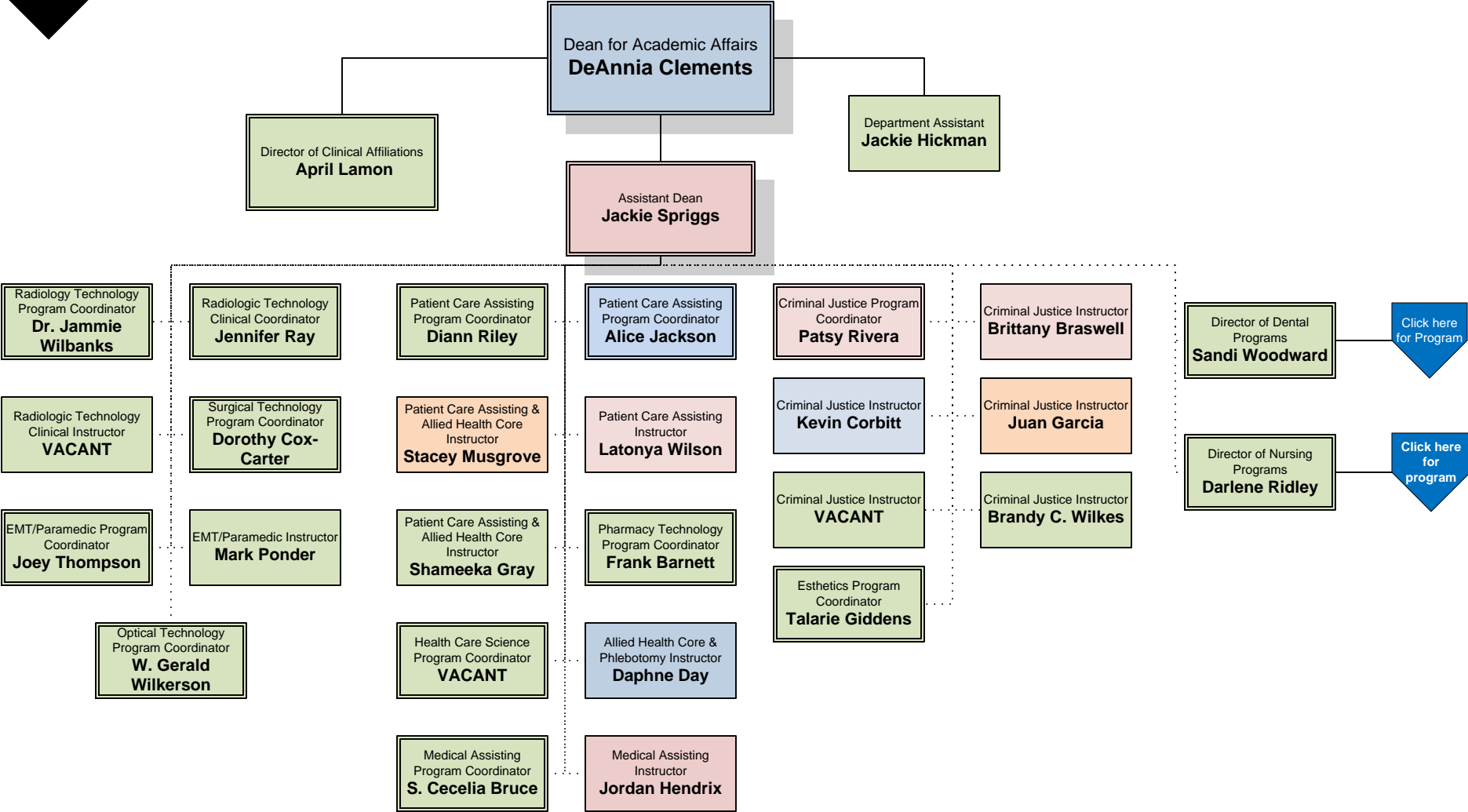
**CAMPUS LEGEND**

BHI  
Ben Hill-Irwin

CK  
Cook

CFE  
Coffee

VLD  
Valdosta



Click here to return to 1<sup>st</sup> page of Allied Health

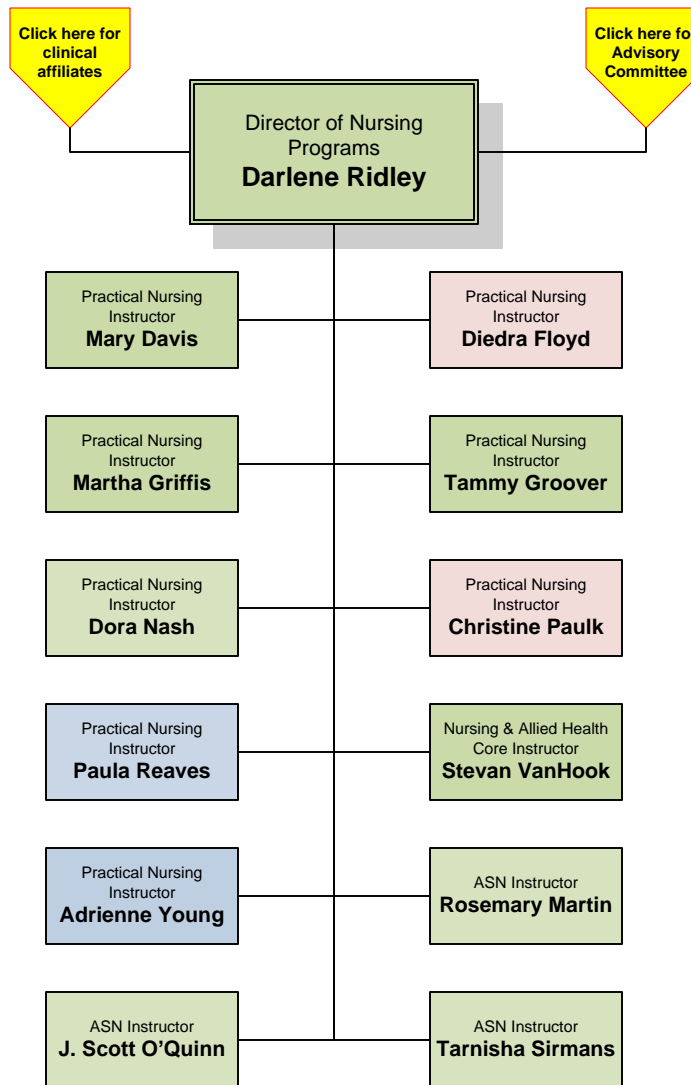
## CAMPUS LEGEND

BHI  
Ben Hill-Irwin

CK  
Cook

CFE  
Coffee

VLD  
Valdosta





**Clinical Affiliates**  
 (click here to return to  
 Nursing Programs)

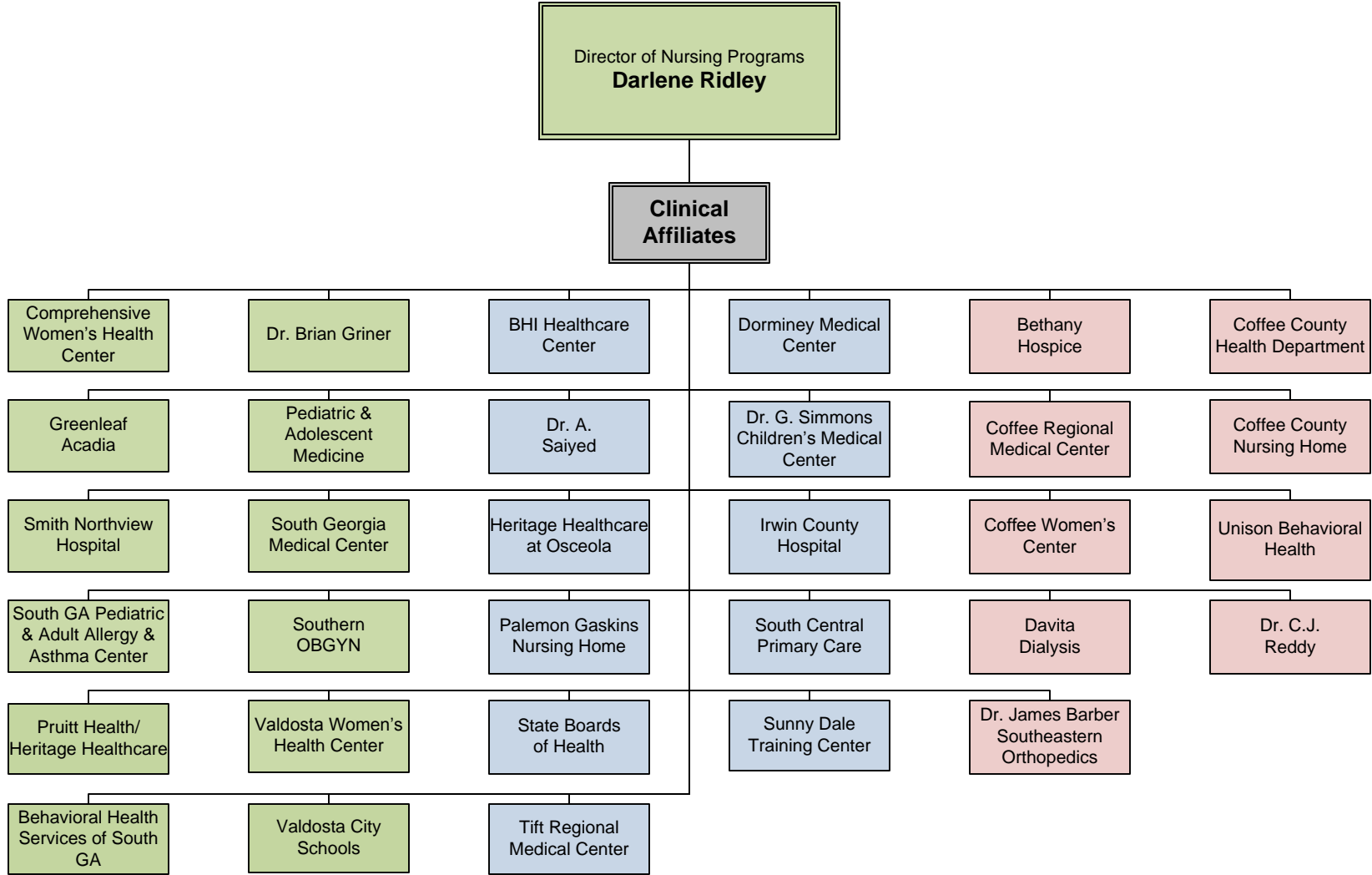
**CAMPUS LEGEND**

BHI  
 Ben Hill-Irwin

CK  
 Cook

CFE  
 Coffee

VLD  
 Valdosta



**Advisory  
Committee**  
(click here to return to  
Nursing Programs)

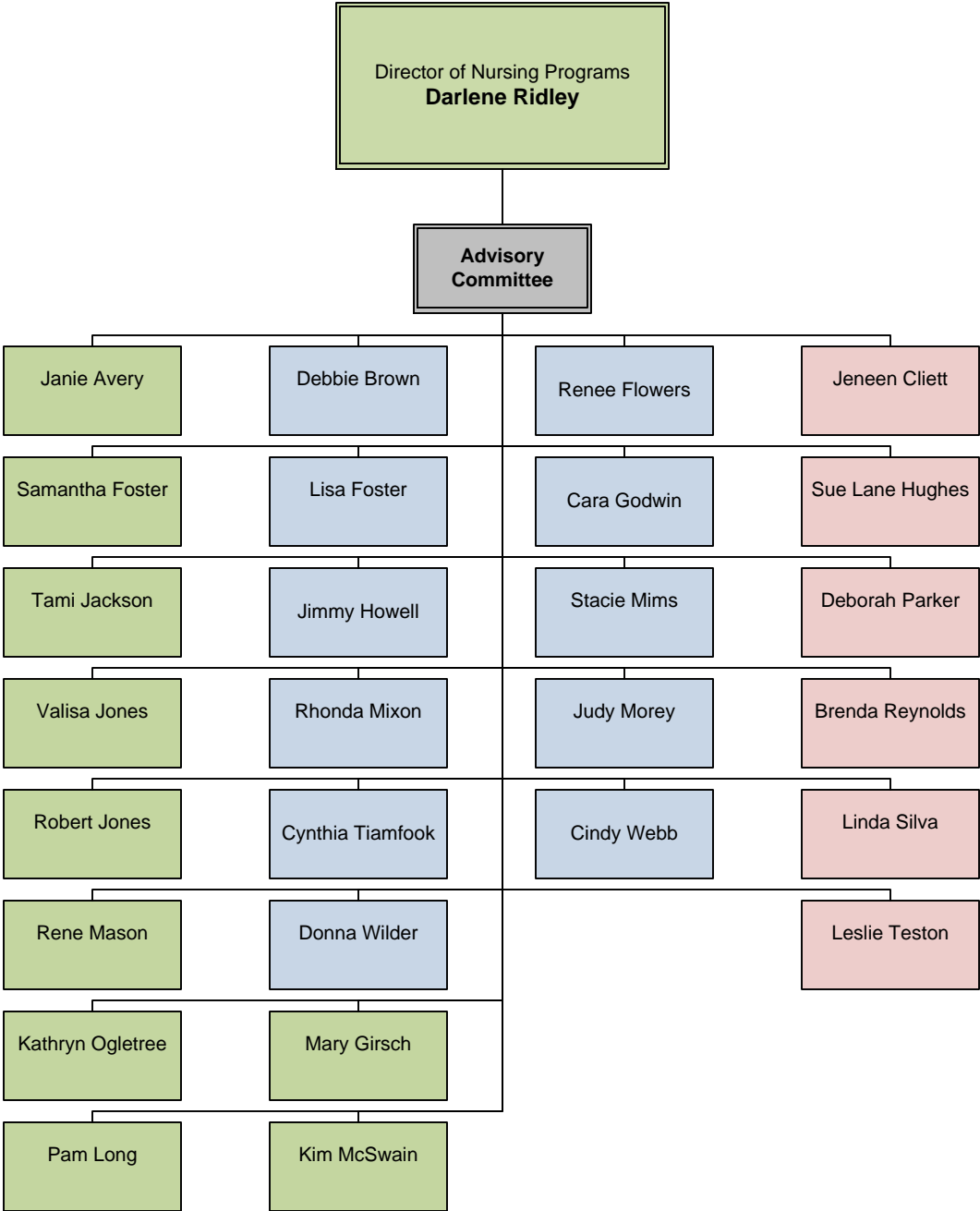
**CAMPUS LEGEND**

BHI  
Ben Hill-Irwin

CK  
Cook

CFE  
Coffee

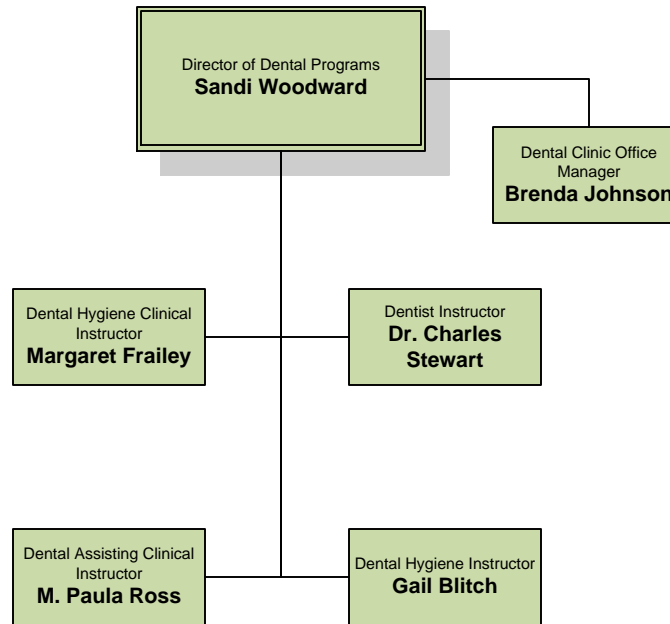
VLD  
Valdosta



[Click here to return to 1<sup>st</sup> page of Allied Health](#)

### CAMPUS LEGEND

BHI Ben Hill-Irwin	CK Cook	CFE Coffee	VLD Valdosta
-----------------------	------------	---------------	-----------------



**Business Department**  
 (click here to return to Academic Affairs)

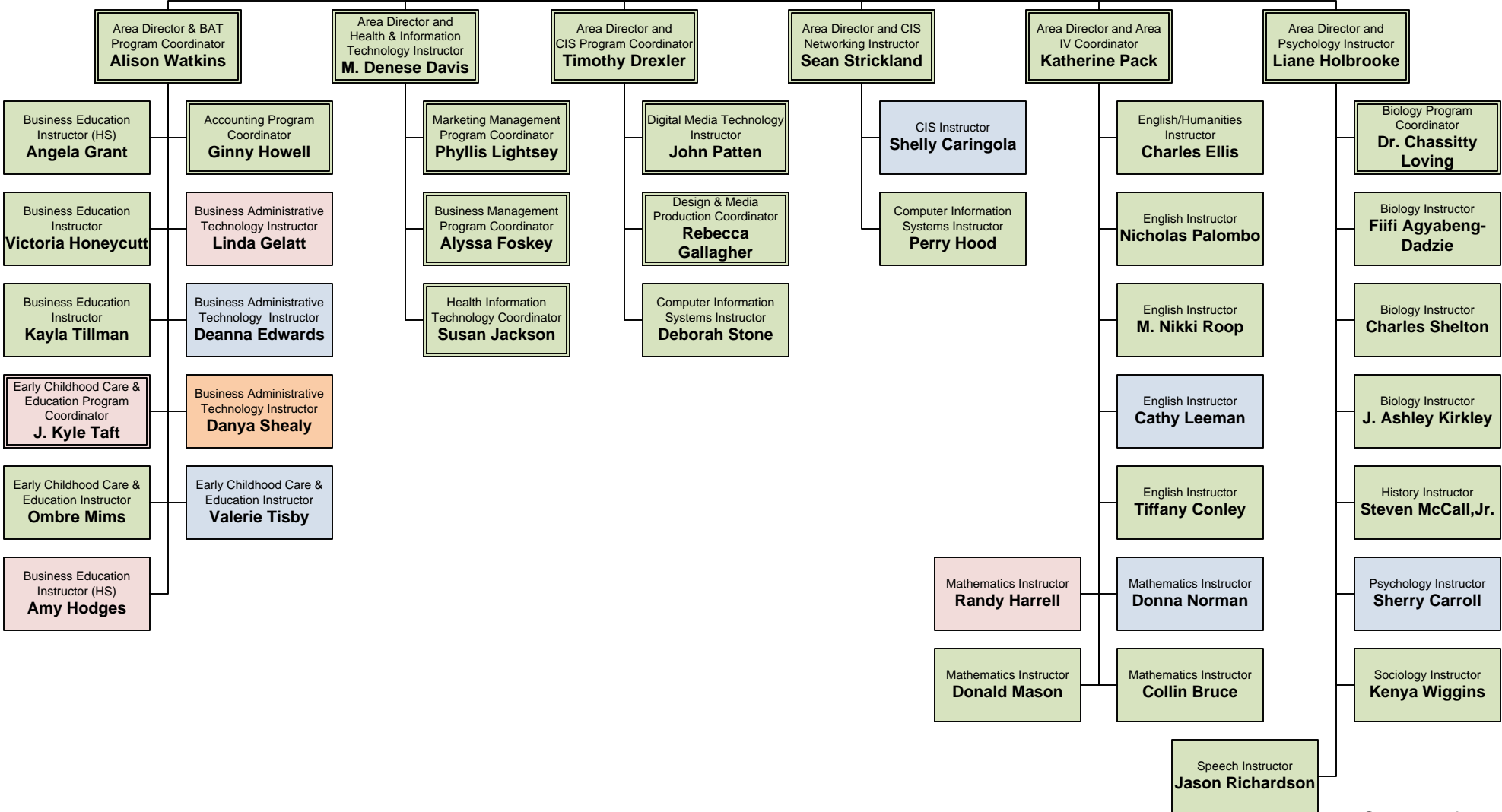
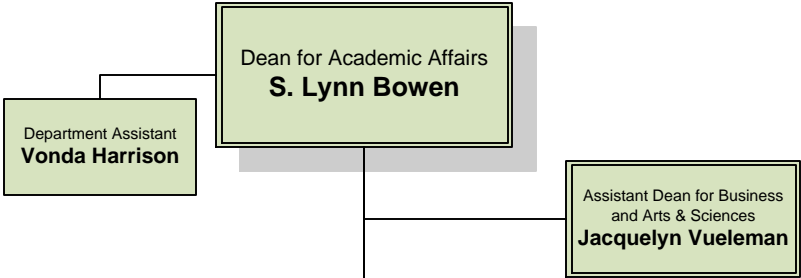
**CAMPUS LEGEND**

BHI  
Ben Hill-Irwin

CK  
Cook

CFE  
Coffee

VLD  
Valdosta



**Technical Instruction**  
 (click here to return to Academic Affairs)

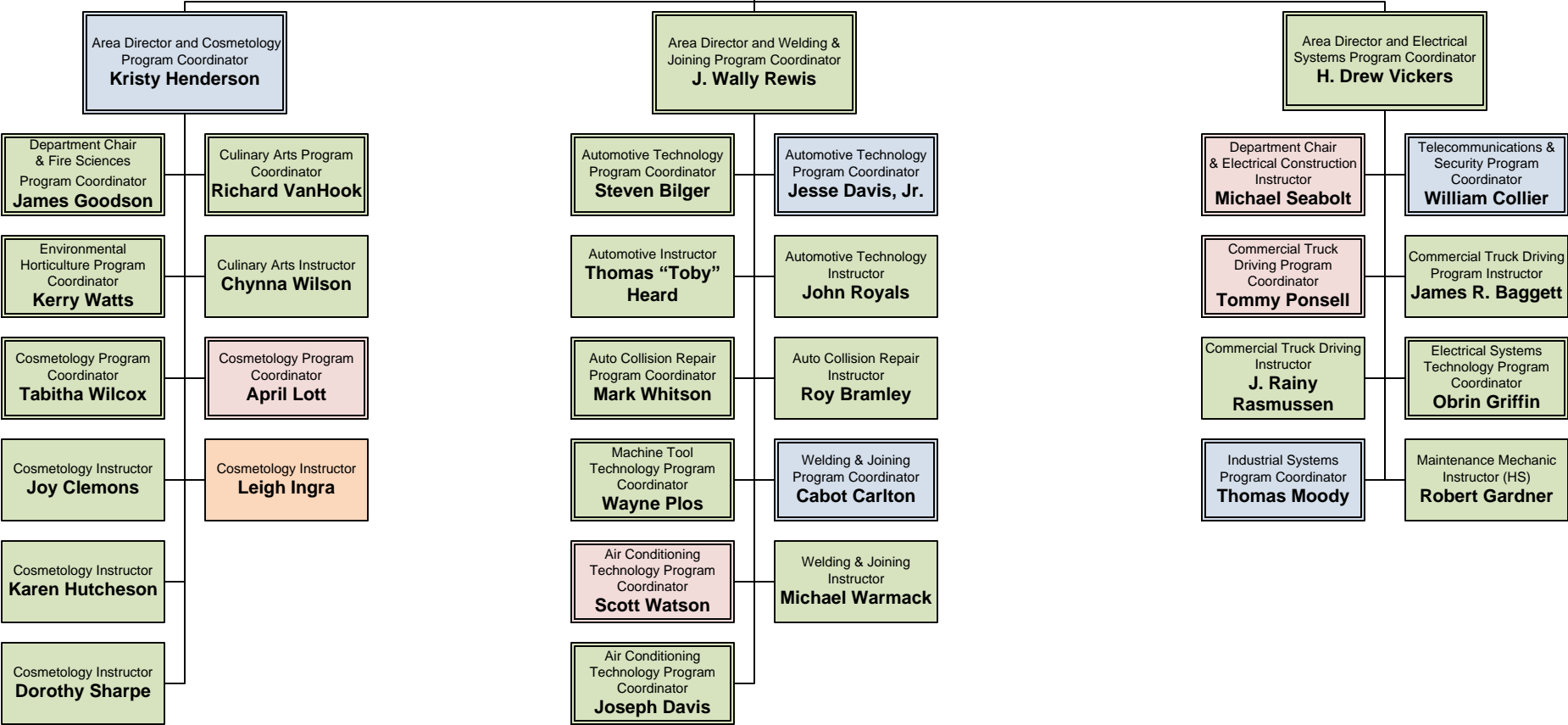
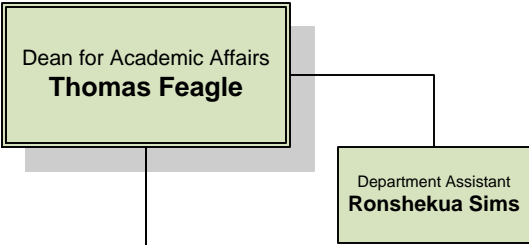
**CAMPUS LEGEND**

BHI  
Ben Hill-Irwin

CK  
Cook

CFE  
Coffee

VLD  
Valdosta

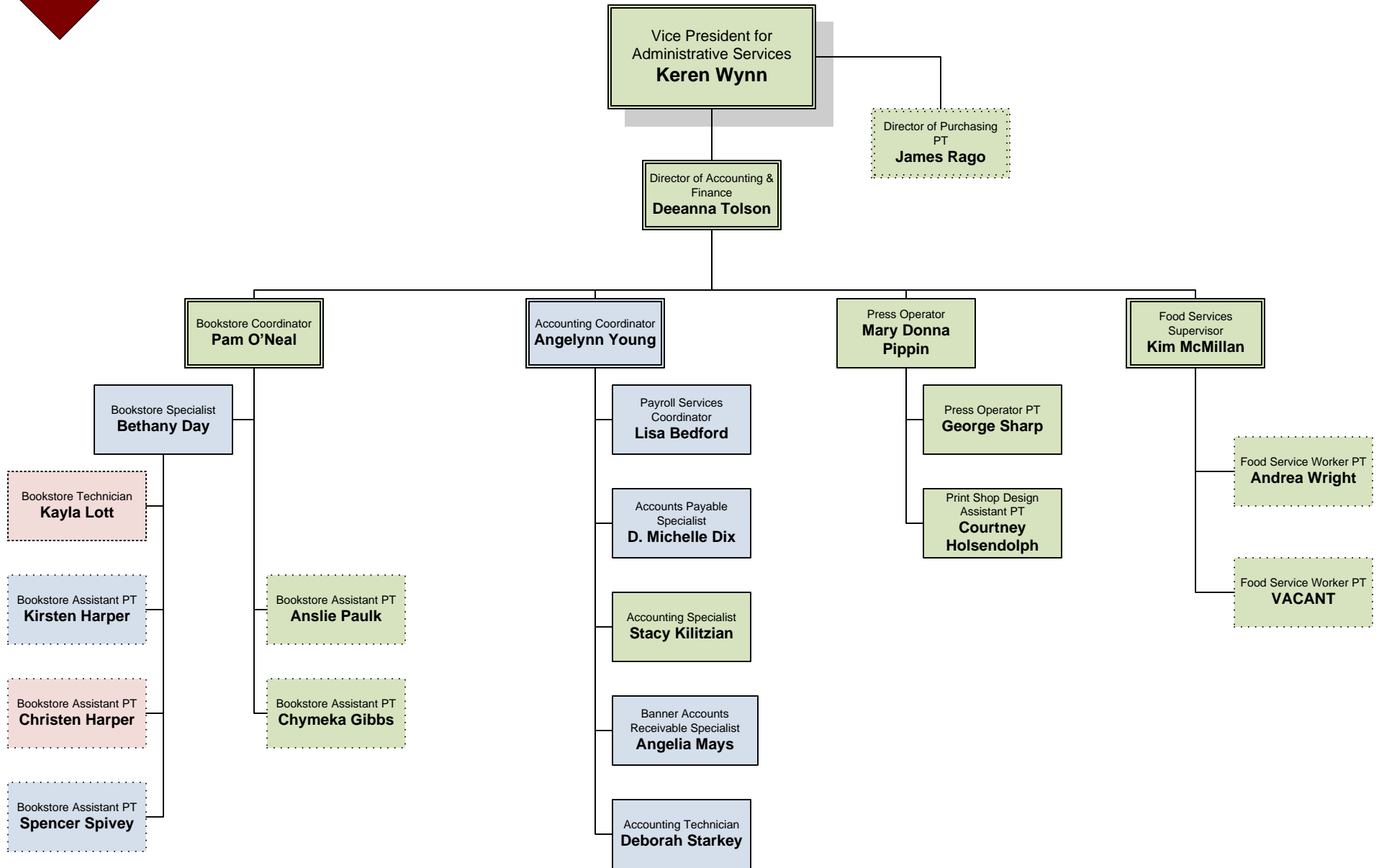


# ADMINISTRATIVE SERVICES

(click here to return to Executive Office)

## CAMPUS LEGEND

BHI Ben Hill-Irwin	CK Cook	CFE Coffee	VLD Valdosta
-----------------------	------------	---------------	-----------------



**ADULT  
EDUCATION  
SERVICES**  
(click here to return to  
Executive Office)

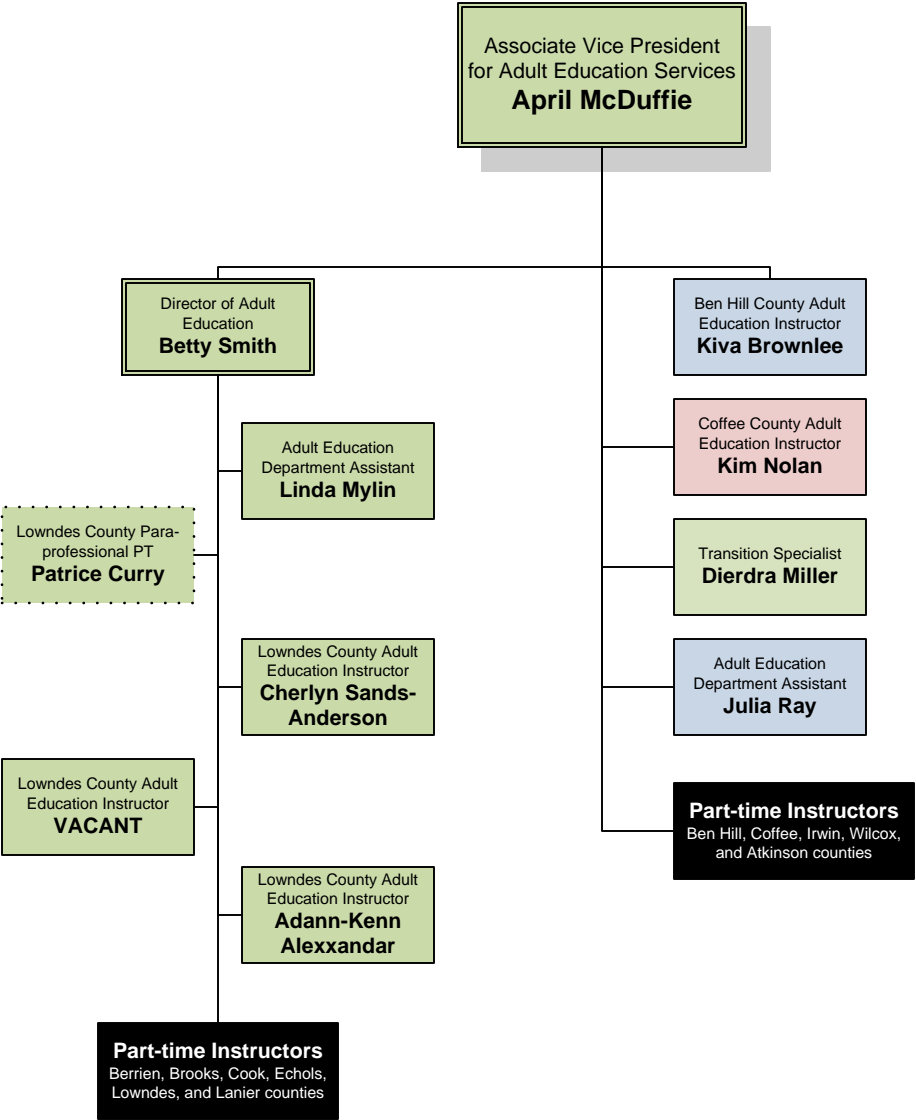
**CAMPUS LEGEND**

BHI  
Ben Hill-Irwin

CK  
Cook

CFE  
Coffee

VLD  
Valdosta



**ECONOMIC DEVELOPMENT**  
 (click here to return to Executive Office)

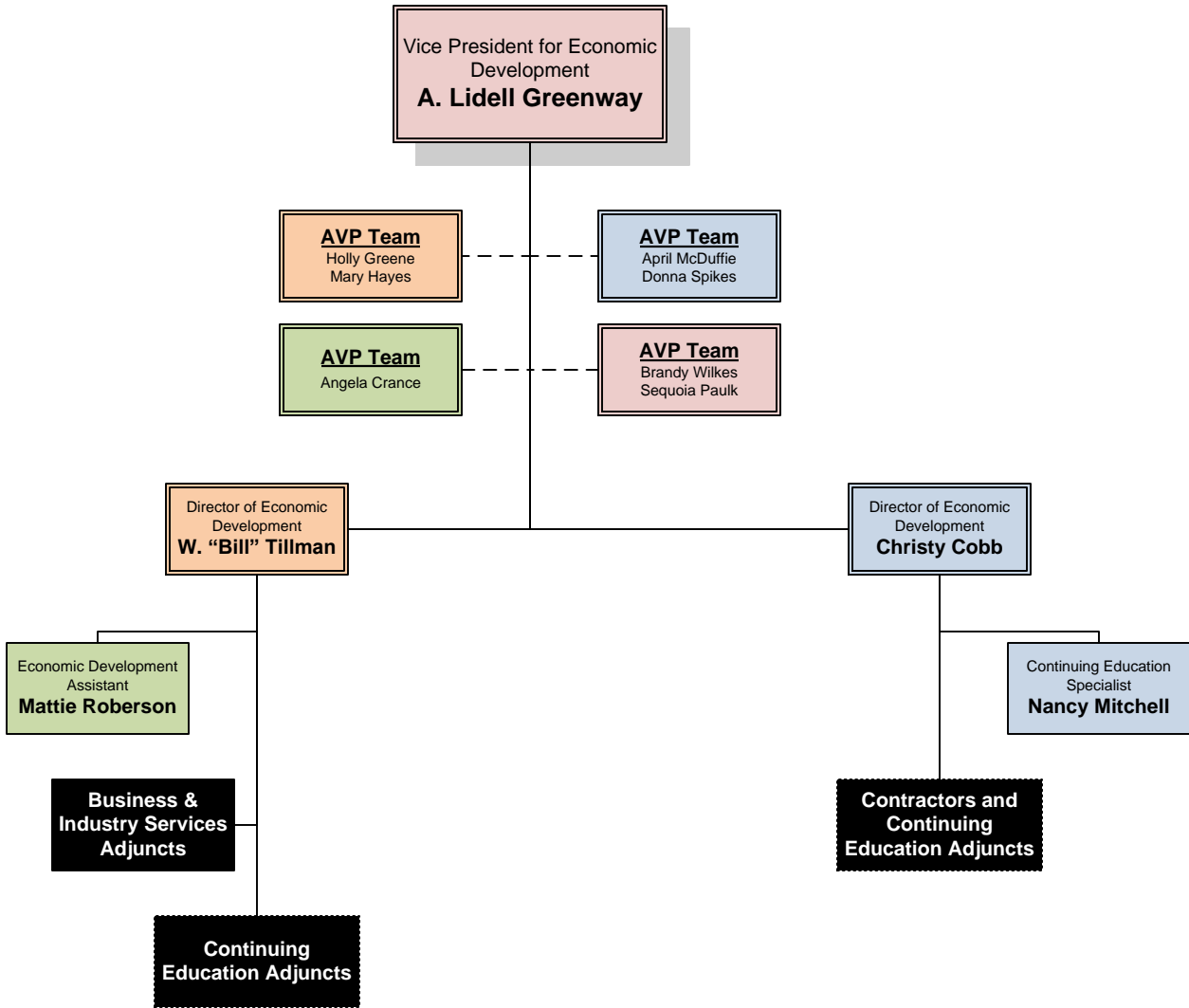
**CAMPUS LEGEND**

BHI  
Ben Hill-Irwin

CK  
Cook

CFE  
Coffee

VLD  
Valdosta





# OPERATIONS & FACILITIES

(click here to return to Executive Office)

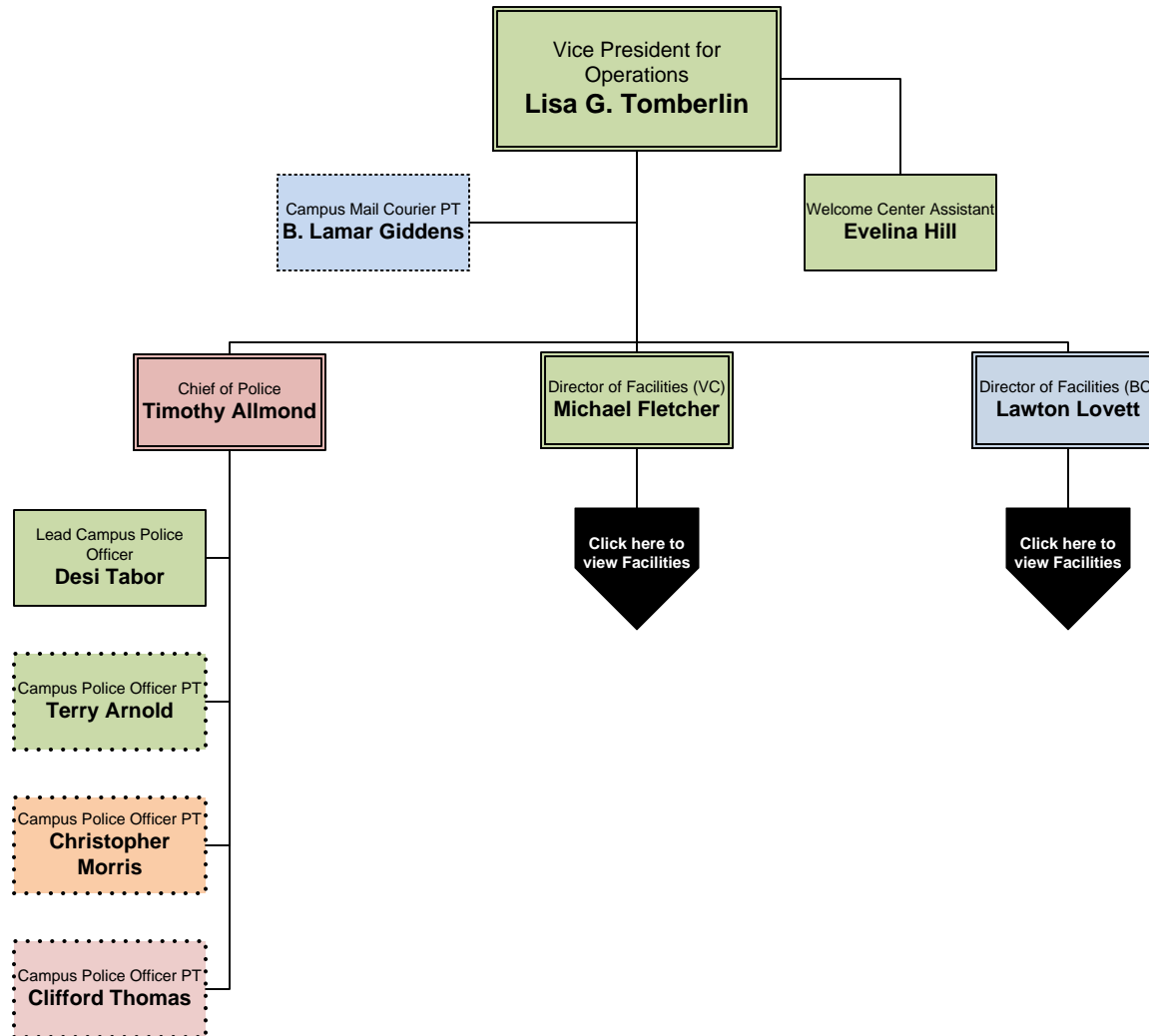
## CAMPUS LEGEND

BHI  
Ben Hill-Irwin

CK  
Cook

CFE  
Coffee

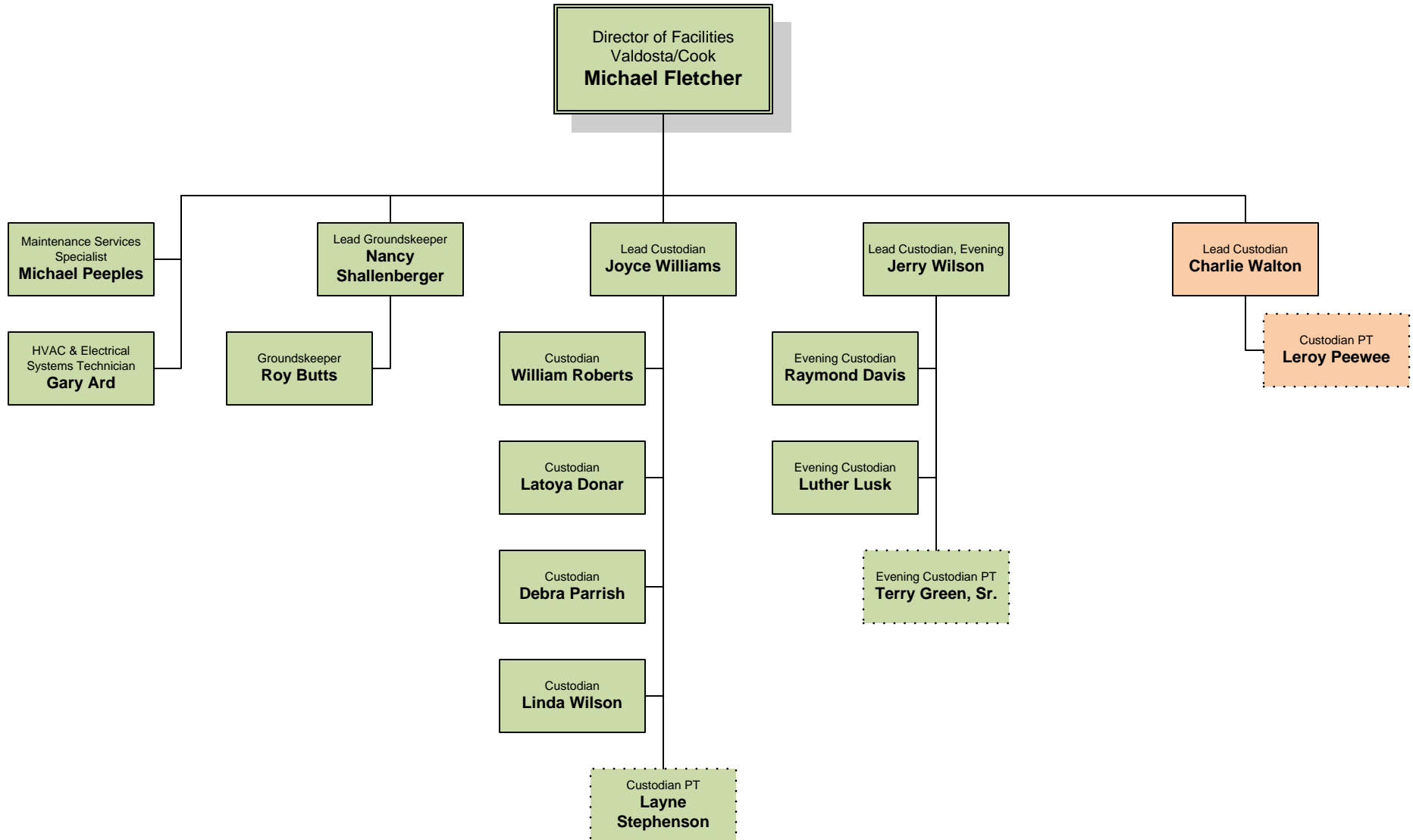
VLD  
Valdosta



**Facilities & Custodial V/C Region**  
(click here to return to Operations)

### CAMPUS LEGEND

BHI Ben Hill-Irwin	CK Cook	CFE Coffee	VLD Valdosta
-----------------------	------------	---------------	-----------------



**Facilities & Custodial  
B/C Region**

(click here to return to  
Operations & Facilities)

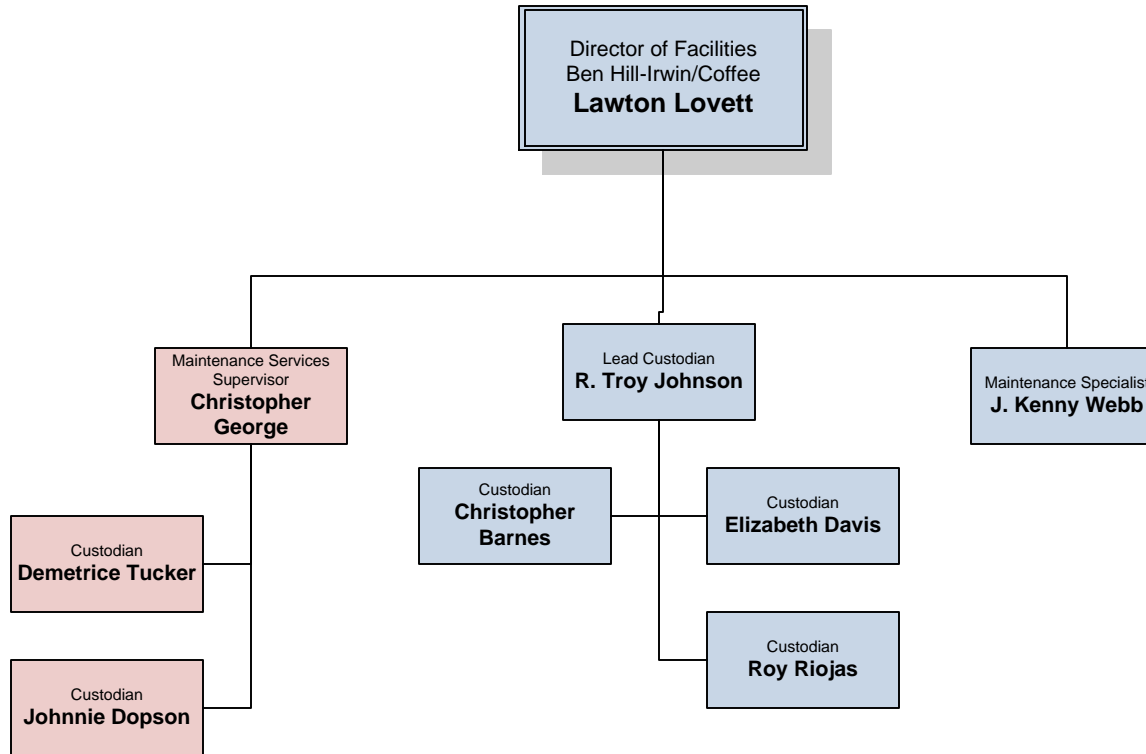
**CAMPUS LEGEND**

BHI  
Ben Hill-Irwin

CK  
Cook

CFE  
Coffee

VLD  
Valdosta



**ENROLLMENT  
MANAGEMENT**  
(click here to return to  
Executive Office)

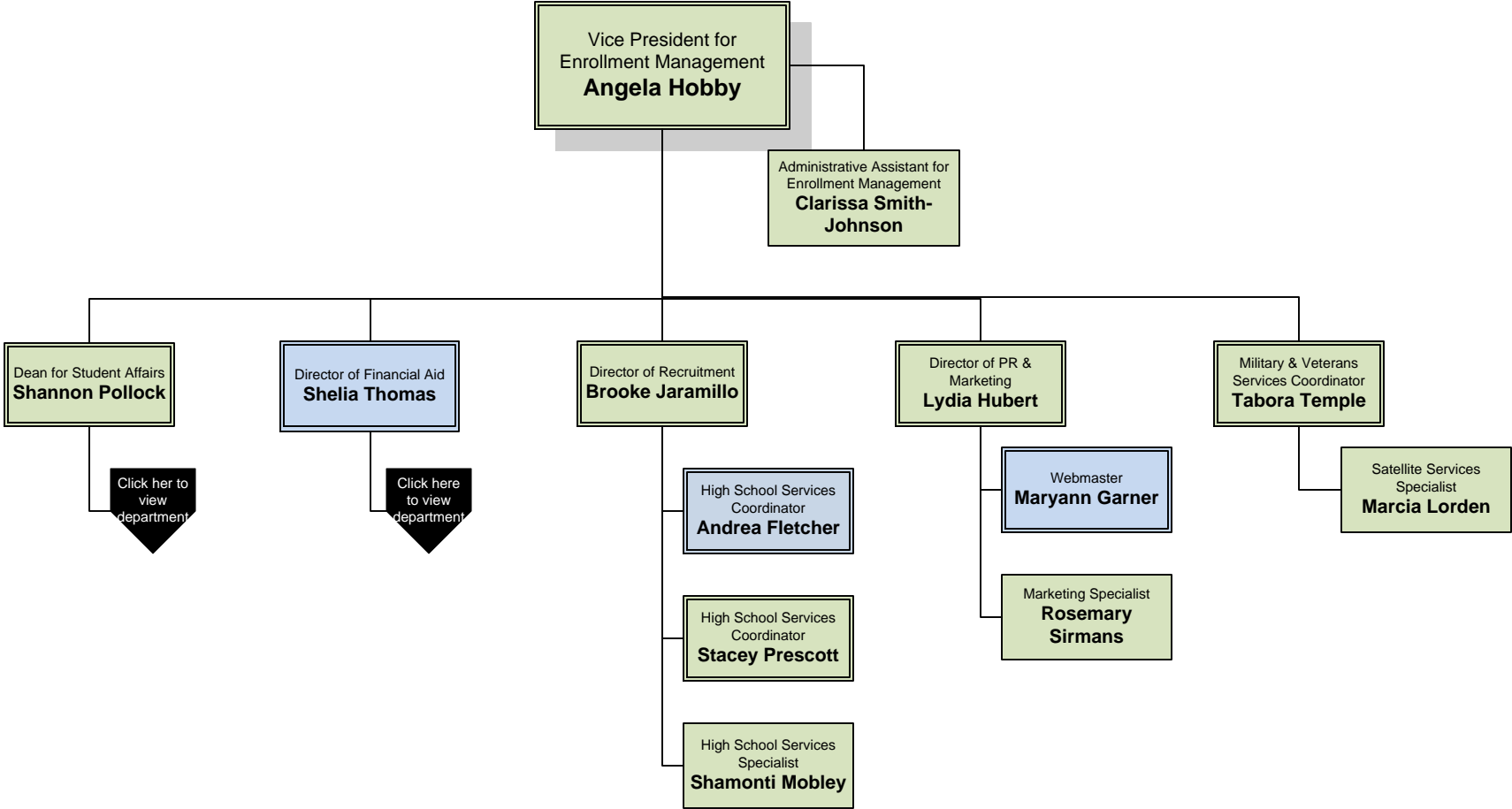
**CAMPUS LEGEND**

BHI  
Ben Hill-Irwin

CK  
Cook

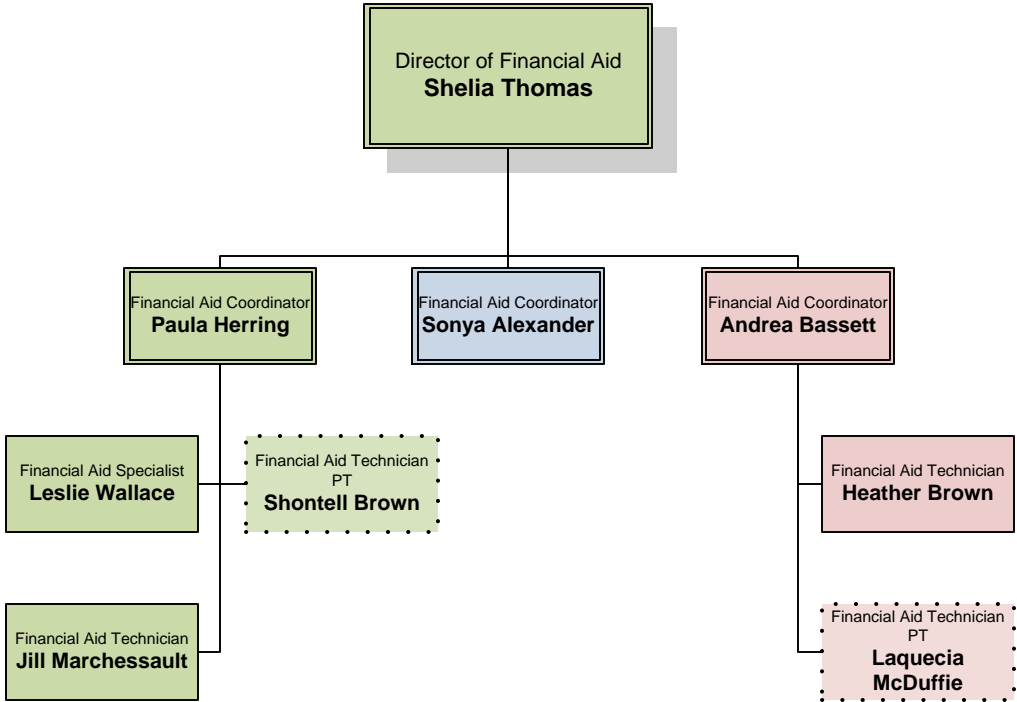
CFE  
Coffee

VLD  
Valdosta



**Financial Aid**  
(click here to return to Enrollment Management)

CAMPUS LEGEND			
BHI Ben Hill-Irwin	CK Cook	CFE Coffee	VLD Valdosta



**Student Affairs**  
 (click here to return to Enrollment Management)

**CAMPUS LEGEND**

BHI  
Ben Hill-Irwin

CK  
Cook

CFE  
Coffee

VLD  
Valdosta

Dean for Student Affairs  
**Shannon Pollock**

